

## INSTALL GUIDE

# Bright Green Grid Dynamic White

### Components required



18-24 AWG wire



Bright Green Dynamic White  
Grid 30



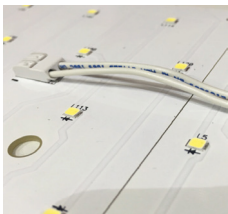
Power supply



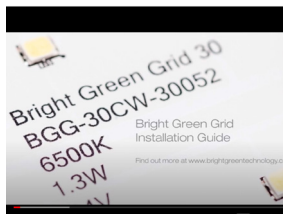
Wire connectors



M4 screws



Interconnect cables



Video installation guide: <https://www.youtube.com/watch?v=um9A54JMVNk>

### Box constraints

Minimum box depth: 40mm

### Construction

Principle materials: FR4 PCB

A, B and C panels have 8 x WAGO 2060 connectors to allow for electrical connections. D panels have 4. It is possible to connect the panels together using any of the same channel connectors on the board.

(CH1 to CH1; CH2 to CH2)

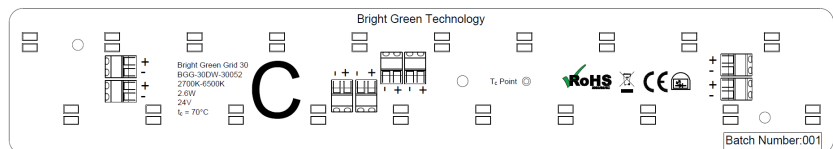
### Layout

If drawings have not been provided, start by placing as many A Panels in the available space. The panels are designed to be butted up to the next panel. This ensures the LED pitch remains constant throughout the box, ensuring even illumination

When steps 1 & 2 have been completed, start laying out Panel B. Panel B is used to fill in the remaining vertical section

Panel C is used to fill in the remaining horizontal section

Panel D is used to fill in the top right hand corner of the box



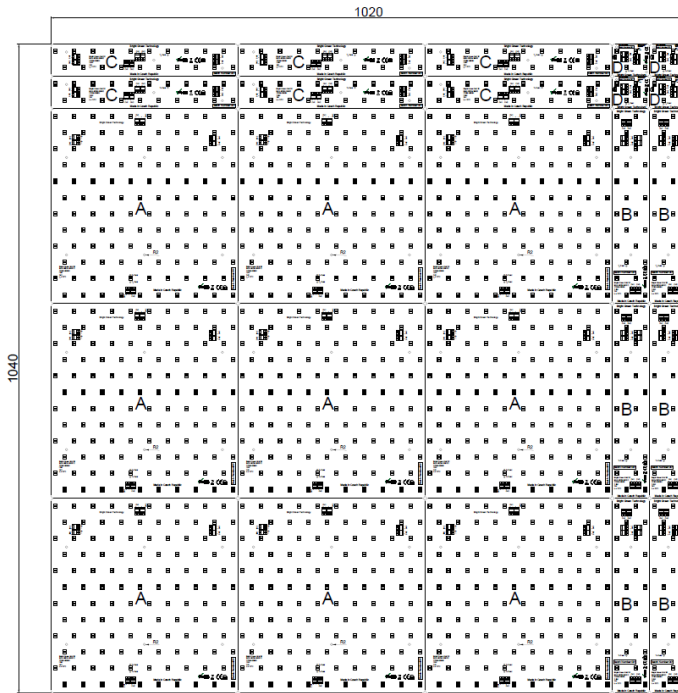
Tel +44 (0) 1932 355221 [info@brightgreentechnology.com](mailto:info@brightgreentechnology.com)  
Find out more at [www.brightgreentechnology.com](http://www.brightgreentechnology.com)

© 2020 Bright Green Technology Limited V20.12

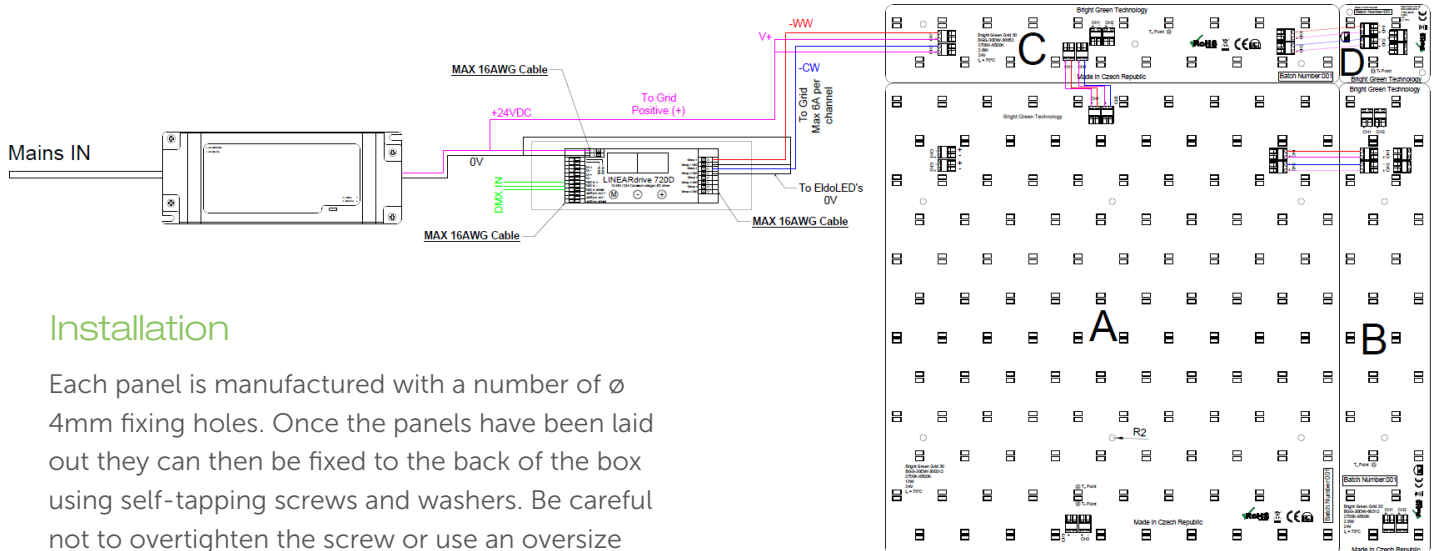


# Bright Green Grid Dynamic White

Example of a 1040 x 1020 box:



## Electrical connection diagram



## Installation

Each panel is manufactured with a number of  $\varnothing$  4mm fixing holes. Once the panels have been laid out they can then be fixed to the back of the box using self-tapping screws and washers. Be careful not to overtighten the screw or use an oversize screw since this may cause damage to the panel.

# Bright Green Grid Dynamic White

## Cable Specification

Bright Green Interconnect Cables are recommended, if these are not used, refer to the cable specification below:

Cable type	Value
Solid	0.2-0.75 mm <sup>2</sup> / 24-18 AWG
Fine-stranded wires	0.2-0.75 mm <sup>2</sup> / 24-18 AWG
Strip length	6 -7 mm / 0.24- 0.28 in

## Connecting Dynamic White Grid 30 Panels using solid core cable

Strip the cable insulation back by 6-7mm

Push cable into connector

To release the cable lightly depress the lever on the connector and pull the cable out

## Connecting Dynamic White Grid 30 Panels using stranded cable

Strip the cable insulation back by 7mm

Lightly depress the lever connector with a pen or screwdriver

Insert cable and release lever

To release the cable lightly depress the lever on the connector and pull the cable out

## Power requirements

Refer to Bright Green Technology engineers for details of the power supplies needed

## Notes & Handling

Store Grid 30 panels in a cool, dry place, make sure to protect from dust and heat

Take care when handling to avoid damaging electrical components

Only connect to a 24 volt power supply

Do not cut the Grid 30 panel or attempt to disassemble or modify the components in any way

Do not drop or bend the panel

Do not drill holes in the panel

## Further information

Refer to <https://www.brightgreentechnology.com> for further information and a video guide